

4PGE13E

13 SEER Gas / Electric
Packaged Unit

Product Specifications

Form No. 4PGE13E-100 (06/2013)

Refrigerant System

- Environmentally friendly R410A refrigerant
- Copper tubing with enhanced fin coils
- Heavy duty, high efficiency scroll compressor

Heat Exchanger

- Tubular aluminized steel

Cabinet Construction

- Insulation to minimize heat loss
- Baked on pre painted steel cabinet finish
- Easy service access
- Wire grill protection
- One piece "no leak" top design
- Internal filter rack

Blower

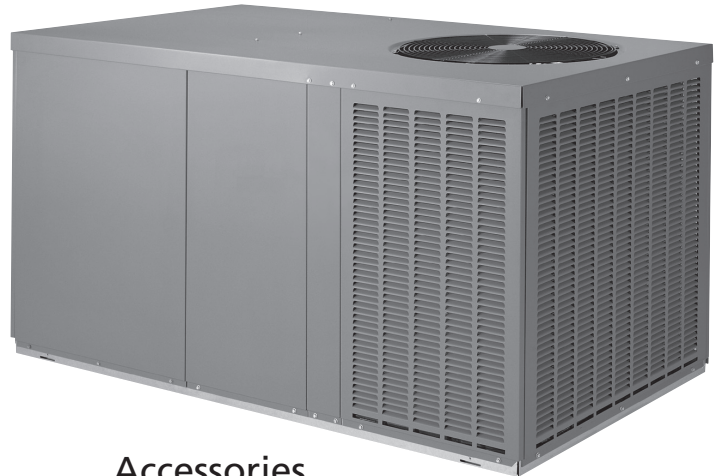
- Insulated compartment to reduce sound
- Easy service split-ring design with quick plug-in wiring
- PSC pre-lubricated motor for low maintenance and maximum efficiency

Controls

- Solid state integrated control board with L.E.D. diagnostics
- Trade available components
- Color coded wiring for easy service

Installation

- L models comply with California Low NOx regulations
- Horizontal or down discharge
- Rectangular duct covers



Accessories

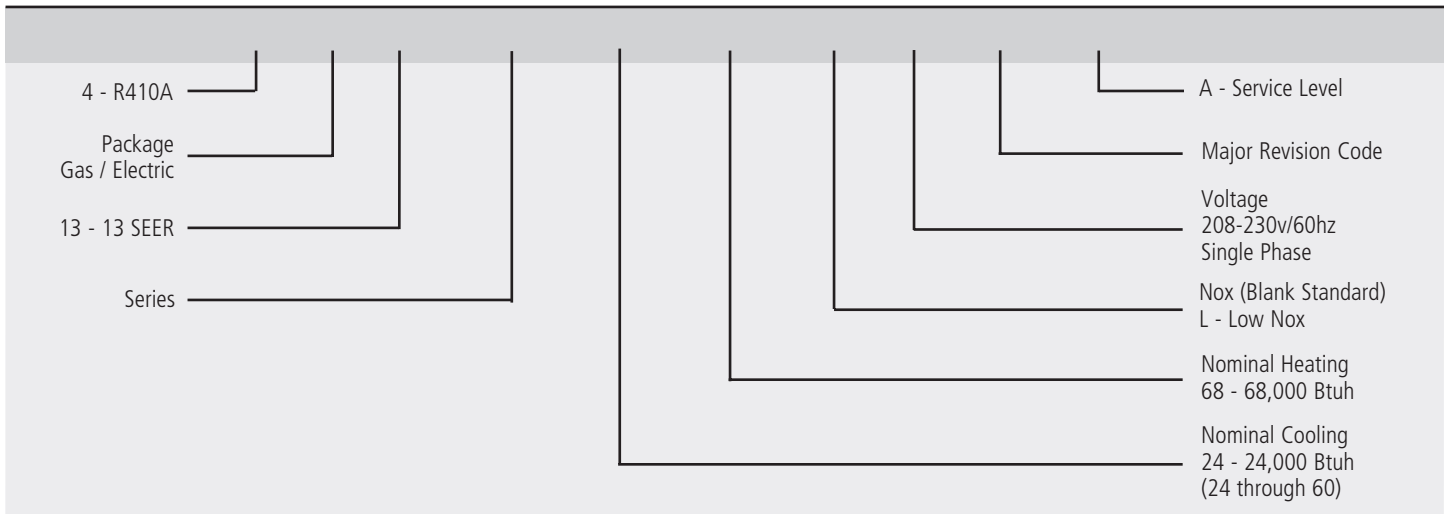
- Hinged Roofcurb
- Lifting Brackets
- Internal Filter Kits
- Low Ambient Kit
- LP Gas Conversion

Warranty

- 10 year limited parts and compressor warranty/lifetime heat exchanger warranty available. See limited warranty document for details.



Model Number Guide



Electrical and Physical Data

Model	Voltage/HZ/ Phase	Voltage Range	Min. Circuit Amp.	Max. Over Current Device (amps)	Compressor		Condenser Fan Motor			Indoor Blower Motor		Exhaust Motor		Refrig. Charge	Weight (lbs.)
					Rated Load (amps)	Locked Rotor (amps)	Rated Load (amps)	Rated HP	Nom. RPM	Rated Load (amps)	Rated HP	Rated Load (amps)	Rated HP		
4PGE13E24	208-230/60/1	197-253	15.9	25	10.7	53	1.1	1/5	1075	1.4	1/4	0.7	1/30	74	390
4PGE13E30	208-230/60/1	197-253	17.0	25	11.6	59	1.1	1/5	1075	1.4	1/4	0.7	1/30	76	390
4PGE13E36	208-230/60/1	197-253	22.5	35	15.2	70	1.1	1/5	1075	2.4	1/2	0.7	1/30	78	405
4PGE13E42	208-230/60/1	197-253	30.5	45	21.1	90	1.7	1/4	1075	2.4	1/2	0.7	1/30	98	520
4PGE13E48	208-230/60/1	197-253	35.5	50	24.1	100	1.7	1/4	1075	3.6	3/4	0.7	1/30	100	540
4PGE13E60	208-230/60/1	197-253	38.3	60	26.4	134	1.7	1/4	1075	3.6	3/4	0.7	1/30	102	555

Performance

Model						Heating			
	SEER	EER	Rated AHRI Capacity ¹ BRUH	Rated Sensible Capacity BTUH	CFM	Input BTUH	Output BTUH	Efficiency AFUE	Temp Rise Range °F
4PGE13E24068	13.0	11.0	22,000	17,000	800	67,500	54,000	80%	35-65
4PGE13E30068	13.0	11.0	28,000	21,000	1010	67,500	54,000	80%	35-65
4PGE13E36068	13.0	11.0	33,400	25,000	1200	67,500	54,000	80%	35-65
4PGE13E36090	13.0	11.0	33,400	25,000	1200	90,000	72,000	80%	35-65
4PGE13E42083	13.0	11.0	41,000	29,900	1400	82,500	66,000	80%	30-60
4PGE13E42110	13.0	11.0	41,000	29,900	1400	110,000	88,000	80%	45-75
4PGE13E42138	13.0	11.0	41,000	29,900	1400	137,500	110,000	80%	45-75
4PGE13E48083	13.0	11.0	47,000	34,300	1600	82,500	66,000	80%	30-60
4PGE13E48110	13.0	11.0	47,000	34,300	1600	110,000	88,000	80%	45-75
4PGE13E48138	13.0	11.0	47,000	34,300	1600	137,500	110,000	80%	45-75
4PGE13E60083	13.0	10.5	57,000	41,000	1800	82,500	66,000	80%	30-60
4PGE13E60110	13.0	10.5	57,000	41,000	1800	110,000	88,000	80%	45-75
4PGE13E60138	13.0	10.5	57,000	41,000	1800	137,500	110,000	80%	45-75

Blower Performance

Model	Blower Tap	CFM @ ext. Static Pressure in in. wc without filter, dry coil						
		0.2	0.3	0.4	0.5	0.6	0.7	0.8
4PGE13E24	Low	800	750	690	630	570	440	300
	Med	1010	950	890	830	760	680	590
	Hi	1160	1100	1030	960	890	810	680
4PGE13E30	Low	800	750	690	630	570	440	300
	Med	1010	950	890	830	760	680	590
	Hi	1160	1100	1030	960	890	810	680
4PGE13E36	Low	1090	1060	1020	980	920	840	640
	Med-Lo	1230	1190	1140	1070	1000	930	790
	Med-Hi	1270	1240	1180	1110	1030	950	810
	Hi	1560	1480	1400	1290	1210	1100	990
4PGE13E42	Low	1140	1120	1100	1080	1040	990	830
	Med-Lo	1300	1280	1250	1210	1170	1110	1050
	Med-Hi	1400	1370	1340	1300	1250	1190	1120
	Hi	1550	1520	1490	1460	1410	1340	1240
4PGE13E48	Low	1570	1550	1520	1480	1420	1350	1250
	Med-Lo	1660	1630	1590	1530	1470	1390	1300
	Med-Hi	1880	1830	1780	1690	1600	1500	1390
	Hi	2200	2120	2010	1900	1800	1690	1560
4PGE13E60	Low	1570	1550	1520	1480	1420	1350	1250
	Med-Lo	1660	1630	1590	1530	1470	1390	1300
	Med-Hi	1880	1830	1780	1690	1600	1500	1390
	Hi	2200	2120	2010	1900	1800	1690	1560

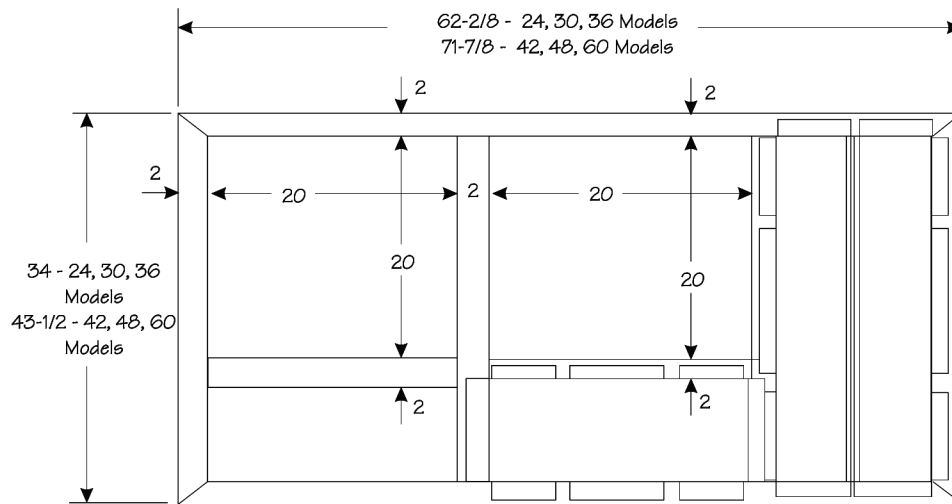
Add .05 Duct Static for Downflow CFM

Cooling Performance Extended Ratings

Model	Indoor Temp DB/WB °F	Outdoor Temp - DB°F														
		65°			82°			95°			105°			115°		
		Btuh	S/T	kW	Btuh	S/T	kW	Btuh	S/T	kW	Btuh	S/T	kW	Btuh	S/T	kW
4PGE13E24	85/72	27,500	0.62	1.52	25,500	0.64	1.80	24,000	0.66	2.01	22,400	0.68	2.25	20,800	0.70	2.30
	80/67	25,700	0.69	1.51	24,000	0.71	1.77	22,000	0.74	2.00	20,000	0.77	2.17	18,200	0.81	2.27
	75/63	24,100	0.72	1.51	21,700	0.75	1.78	19,800	0.77	1.98	18,100	0.82	2.21	16,200	0.86	2.25
	75/57	22,400	1.00	1.48	20,800	1.00	1.75	19,600	1.00	1.96	17,900	1.00	2.19	16,200	1.00	2.22
4PGE13E30	85/72	35,100	0.61	1.98	33,100	0.64	2.34	31,600	0.66	2.61	29,500	0.68	2.89	27,500	0.70	2.89
	80/67	33,000	0.69	1.97	31,000	0.72	2.30	28,600	0.74	2.60	26,800	0.78	2.86	24,400	0.79	2.88
	75/63	31,200	0.73	1.96	28,700	0.76	2.32	26,700	0.78	2.58	24,100	0.81	2.84	21,500	0.84	2.83
	75/57	28,700	1.00	1.93	26,900	1.00	2.29	25,500	1.00	2.55	23,600	1.00	2.82	21,700	1.00	2.82
4PGE13E36	85/72	44,100	0.62	2.40	41,100	0.64	2.84	38,900	0.65	3.18	35,500	0.68	3.52	32,300	0.71	3.52
	80/67	41,100	0.68	2.38	38,300	0.70	2.79	34,800	0.74	3.16	31,600	0.77	3.47	28,100	0.82	3.46
	75/63	38,400	0.71	2.37	34,800	0.74	2.80	32,000	0.77	3.12	28,500	0.81	3.44	25,100	0.85	3.42
	75/57	35,800	1.00	2.33	33,100	1.00	2.77	31,000	1.00	3.10	28,000	1.00	3.41	25,000	1.00	3.39
4PGE13E42	85/72	49,200	0.63	2.86	45,400	0.66	3.39	42,500	0.69	3.79	39,700	0.71	4.20	37,000	0.73	4.18
	80/67	46,000	0.69	2.85	44,300	0.70	3.34	41,500	0.71	3.77	39,300	0.76	4.15	32,500	0.82	4.12
	75/63	44,000	0.71	2.84	39,700	0.75	3.34	36,400	0.78	3.73	32,000	0.83	4.09	27,600	0.88	4.04
	75/57	40,000	1.00	2.79	38,300	1.00	3.30	36,900	1.00	3.69	32,900	1.00	4.07	28,900	1.00	4.04
4PGE13E48	85/72	57,100	0.61	3.29	53,900	0.63	3.89	51,500	0.64	4.34	48,100	0.67	4.79	44,700	0.70	4.84
	80/67	53,600	0.68	3.27	50,900	0.70	3.84	47,500	0.72	4.32	43,800	0.75	4.68	39,500	0.79	4.78
	75/63	50,600	0.71	3.25	46,300	0.74	3.82	43,100	0.76	4.24	39,200	0.79	4.66	35,400	0.81	4.71
	75/57	46,600	1.00	3.20	44,100	1.00	3.79	42,300	1.00	4.23	38,700	1.00	4.65	35,200	1.00	4.68
4PGE13E60	85/72	72,400	0.61	4.00	68,000	0.62	4.74	64,600	0.63	5.30	58,800	0.66	5.90	52,900	0.68	5.92
	80/67	67,900	0.66	3.95	62,700	0.69	4.58	57,500	0.71	5.23	55,400	0.74	5.75	47,000	0.76	5.77
	75/63	63,900	0.69	3.91	57,900	0.72	4.64	53,200	0.74	5.19	47,700	0.77	5.71	42,200	0.80	5.67
	75/57	59,100	1.00	3.87	54,600	1.00	4.58	51,200	1.00	5.13	46,500	1.00	5.67	41,800	1.00	5.65

Accessories

Description	Where Used	Kit Number
34M72	Low Ambient Kit	All 4PGE's
92M51	Lifting Brackets	All 4PGE's
92M54	Internal Filter Kit	4PGE24, 30, 36
92M55	Internal Filter Kit	4PGE42, 48, 60
92M57	LP Conversion Kit	4PGE68 and 90
92M58	LP Conversion Kit	4PGE83, 110 and 138
92M99	Roof Curb 8 inch height	4PGE24, 30, 36
93M00	Roof Curb 14 inch height	4PGE24, 30, 36
93M01	Roof Curb 8 inch height	4PGE42, 48, 60
93M02	Roof Curb 14 inch height	4PGE42, 48, 60



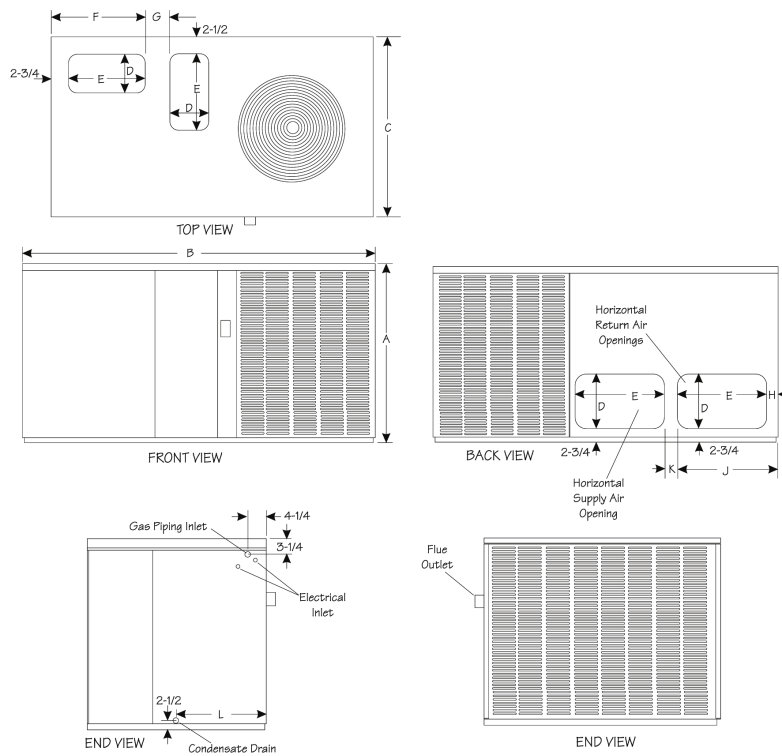
TOP VIEW



SIDE VIEW

Dimensions (in.)

Model	A	B	C	D	E	F	G	H	J	K	L
4PGE13E24	34-1/4	65-3/8	36-1/2	11-1-4	17-1/4	20	8-1/2	3	20-1/4	4-1/2	19
4PGE13E30											
4PGE13E36											
4PGE13E42	38-1/4	78	46	11-1-4	19-1/4	22	9-1/4	3-1/4	22-1/4	4	16-1/4
4PGE13E48											
4PGE13E60											



Revisions		
Section	Page #	Description
Performance	3	Rating tables revised

All specifications and illustrations subject to change without notice and without incurring obligations.

